



**2 & 3 BHK Homes  
Tathvade, Pune**

# Azure

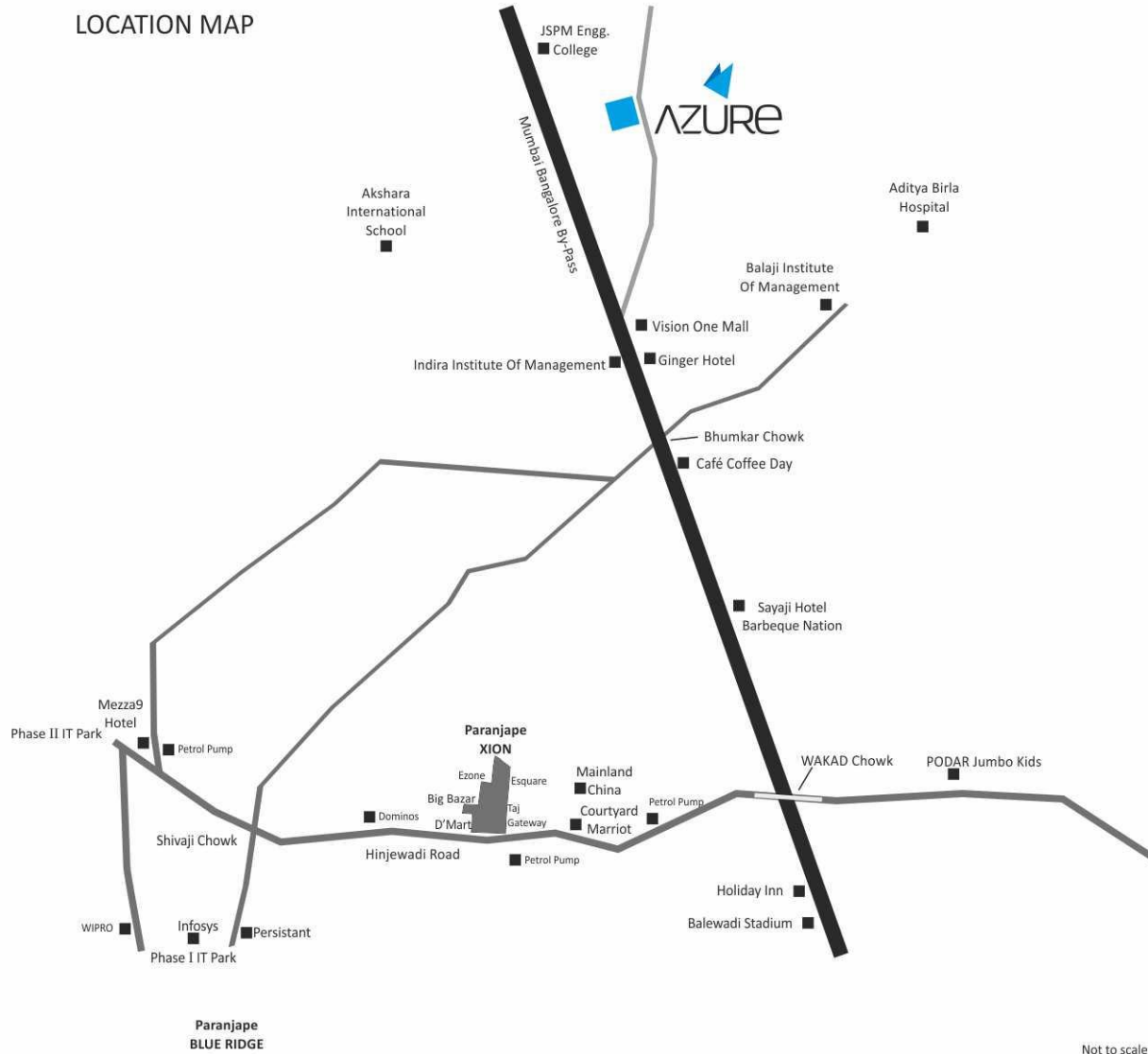
## 2 & 3 BHK Apartments

Introducing Azure, a 2 & 3 BHK project in Tathawade, Pune.

Azure makes sure that distance isn't taking a toll on your family life. The project is strategically located in Tathawade, the destination IT crowd is all-ready to call home.

At a short distance away is Rajiv Gandhi Infotech Park. And the Mumbai-Bengaluru Highway is in the vicinity. On the other side, you are not far from PCMC and Chakan Industrial Areas

# LOCATION MAP



Not to scale





AZURE

10%-70%  
the 5 GROUP

10%-70%  
NEW LEAN & FIT

SPORT









# Layout Plan



Towards Tathwade

Club House

Baby Pool

Swimming Pool

Lawn

Main Entrance

Shopping Zone

Shopping Zone



Towards Mumbai - Bengaluru Bypass  
Bhumkar Chowk

## Azure Building C Plans

GROUND FLOOR PLAN



MEZZANINE FLOOR PLAN



**C WING**  
GROUND + MEZZANINE FLOOR

Area statement in Sq. Meter

SHOP NO.	CARPET AREA	MEZZANINE AREA
21	25.06	12.51
22	26.00	13.00
23	22.33	11.14
24	17.46	8.69
25	40.77	20.15
26	11.37	5.51
27	12.26	5.95
28	11.37	5.50

Area statement in Sq. Meter

SHOP NO.	CARPET AREA	MEZZANINE AREA
29	31.39	15.48
30	12.40	6.33
31	14.48	7.21
32	18.86	9.25
33	17.94	8.79
34	87.82	43.71
35	67.03	33.50
36	67.03	33.50

Factor of conversion from Sq. Meter to Sq. Feet is 10.764



**C WING**  
1ST FLOOR PLAN

Area statement in Sq. Meter

FLAT NO.	TYPE	CARPET AREA	TERRACE CARPET	ENT. AREA	COURTYARD AREA
101	2 ½ BHK	68.47	92.21	0.00	22.12
102	3-BHK	89.90	23.44	2.08	25.01
104	3-BHK	89.90	23.45	2.08	24.99
105	2 ½ BHK	68.88	70.20	0.00	22.12

Factor of conversion from Sq. Meter to Sq. Feet is 10.764





**C WING**  
2ND FLOOR PLAN

Area statement in Sq. Meter

FLAT NO.	TYPE	CARPET AREA	TERRACE CARPET	ENT. AREA	COURTYARD AREA
201	2-BHK	60.10	13.11	0.00	0
202	3-BHK	89.80	19.56	2.08	0
203	2-BHK	63.00	18.28	2.08	18.06
204	3-BHK	89.80	19.56	2.08	0
205	2-BHK	60.10	13.11	0.00	0

Factor of conversion from Sq. Meter to Sq. Feet is 10.764





## C WING

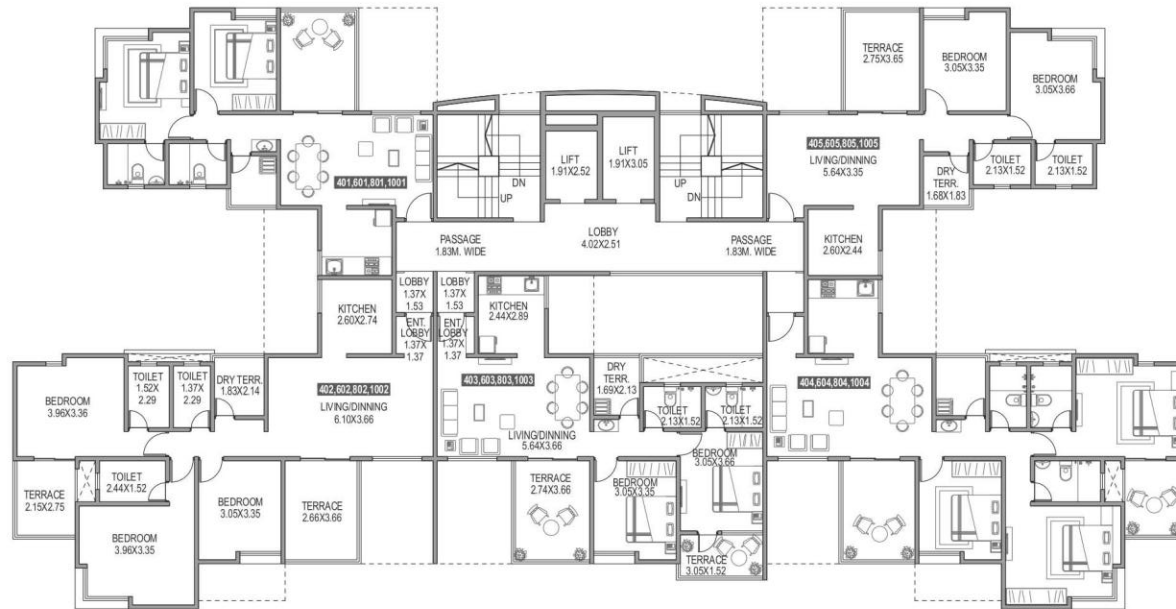
3RD, 5TH, 9TH & 11TH FLOOR PLAN

Area statement in Sq. Meter

FLAT NO.	TYPE	CARPET AREA	TERRACE CARPET	ENT. AREA
301.501.901.1101	2-BHK	60.07	14.48	0.00
302.502.902.1102	3-BHK	89.90	19.38	2.08
303.503.903.1103	2-BHK	63.67	18.19	2.08
304.504.904.1104	3-BHK	89.90	19.38	2.08
305.505.905.1105	2-BHK	60.07	14.48	0.00

Factor of conversion from Sq. Meter to Sq. Feet is 10.764





**C WING**  
4TH, 6TH, 8TH & 10TH FLOOR PLAN

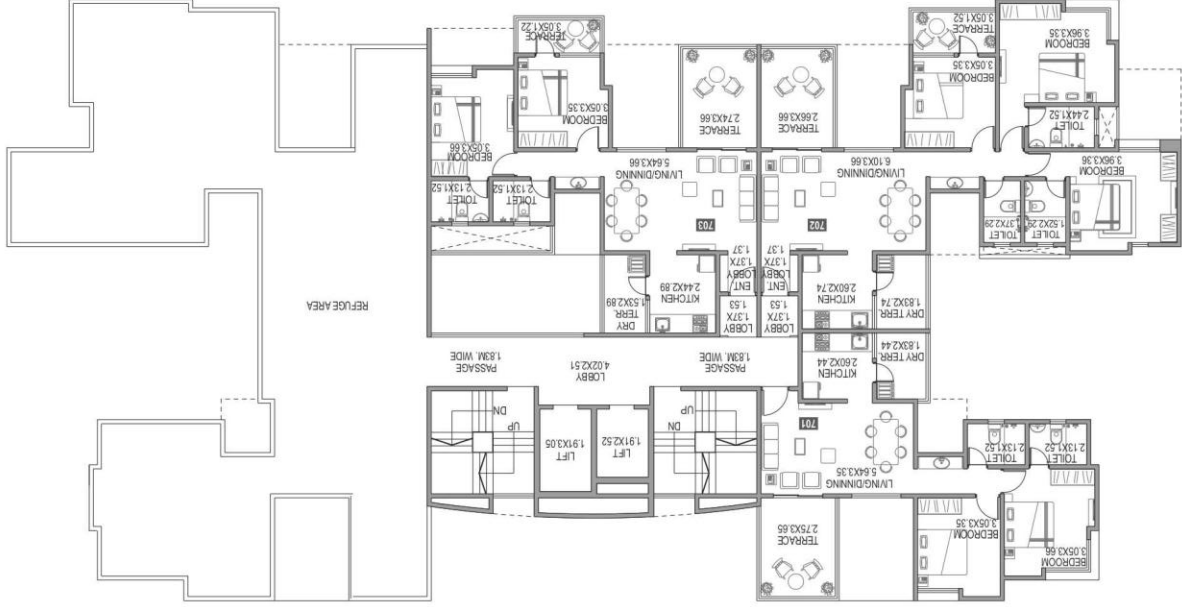
Area statement in Sq. Meter

FLAT NO.	TYPE	CARPET AREA	TERRACE CARPET	ENT. AREA
401,601,801,1001	2-BHK	60.10	13.11	0.00
402,602,802,1002	3-BHK	89.80	19.56	2.08
403,603,803,1003	2-BHK	63.00	18.28	2.08
404,604,804,1004	3-BHK	89.80	19.56	2.08
405,605,805,1005	2-BHK	60.10	13.11	0.00

Factor of conversion from Sq. Meter to Sq. Feet is 10.764



**C WING**  
7TH FLOOR PLAN



Area statement in Sq. Meter

FLAT NO.	TYPE	CARPET AREA	TERRACE AREA	ENT AREA
701	2-BHK	60.10	14.48	0.00
702	3-BHK	89.90	19.38	2.08
703	2-BHK	63.67	18.19	2.08

Factor of conversion from Sq. Meter to Sq. Feet is 10.764





## C" WING

### 12TH FLOOR PLAN



## C WING

### 12TH FLOOR PLAN

Area statement in Sq. Meter

FLAT NO.	TYPE	CARPET AREA	TERRACE CARPET	ENT. AREA
1201	2-BHK	60.10	13.11	0.00
1202	3-BHK	89.80	19.56	2.08
1203	2-BHK	63.00	18.28	2.08

Factor of conversion from Sq. Meter to Sq. Feet is 10.764



## Azure Building D Plans



**D WING**  
1ST FLOOR PLAN

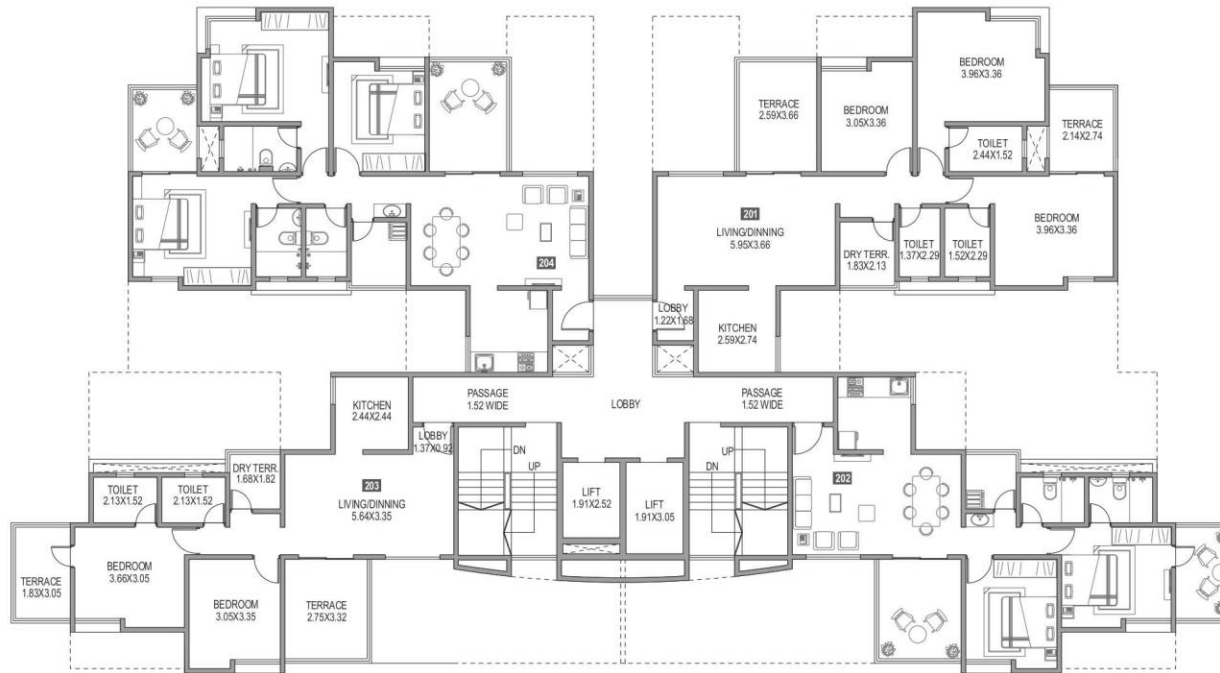
Area statement in Sq. Meter

FLAT NO.	TYPE	CARPET AREA	TERRACE CARPET	COURTYARD AREA
101, 104	3-BHK	89.57	23.11	24.97
102, 103	2-BHK	60.00	36.62	16.59

Factor of conversion from Sq. Meter to Sq. Feet is 10.764



## "D" WING 2ND FLOOR PLAN



### D WING 2ND FLOOR PLAN

Area statement in Sq. Meter

FLAT NO.	TYPE	CARPET AREA	TERRACE CARPET
201, 204	3-BHK	89.52	19.24
202, 203	2-BHK	60.00	17.75

Factor of conversion from Sq. Meter to Sq. Feet is 10.764





**D WING**  
4TH, 6TH, 8TH & 10TH FLOOR PLAN

Area statement in Sq. Meter

FLAT NO.	TYPE	CARPET AREA	TERRACE CARPET
401.601.801.1001 404.604.804.1004	3-BHK	89.52	19.24
402.602.802.1002 403.603.803.1003	2-BHK	60.00	17.75

Factor of conversion from Sq. Meter to Sq. Feet is 10.764



## "D" WING



### D WING

3RD, 5TH, 9TH & 11TH FLOOR PLAN

Area statement in Sq. Meter

FLAT NO.	TYPE	CARPET AREA	TERRACE CARPET
301.501.901,1101			
304.504.904,1104	3-BHK	89.57	19.15
302.502.902,1102			
303.503.903,1103	2-BHK	60.00	17.86

Factor of conversion from Sq. Meter to Sq. Feet is 10.764





**D WING**  
7TH FLOOR PLAN

Area statement in Sq. Meter

FLAT NO.	TYPE	CARPET AREA	TERRACE CARPET
701, 703	3-BHK	89.57	19.15
702	2-BHK	60.00	17.86

Factor of conversion from Sq. Meter to Sq. Feet is 10.764





**D WING**  
12TH FLOOR PLAN

Area statement in Sq. Meter

FLAT NO.	TYPE	CARPET AREA	TERRACE CARPET
1201, 1203	3-BHK	89.52	19.24
1202	2-BHK	60.00	17.75

Factor of conversion from Sq. Meter to Sq. Feet is 10.764





## Azure Building E Plans



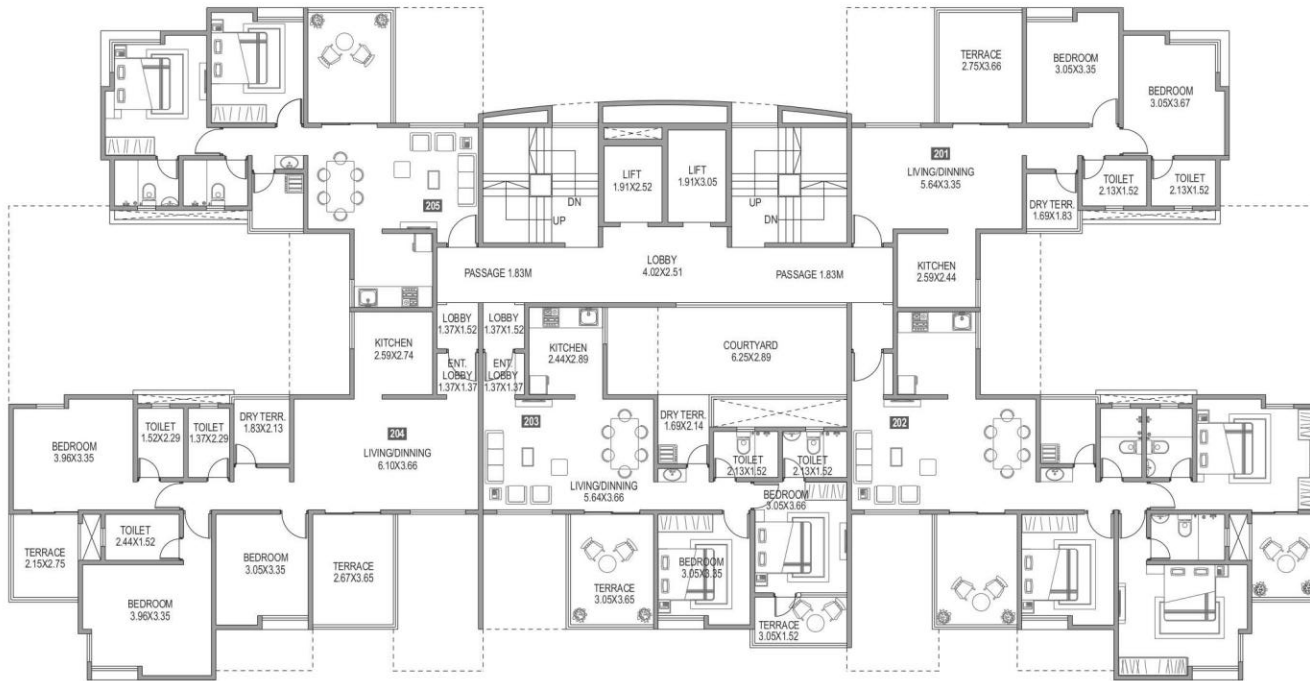
**E WING**  
1ST FLOOR PLAN

Area statement in Sq. Meter

FLAT NO.	TYPE	CARPET AREA	TERRACE CARPET	ENT. AREA	COURTYARD AREA
101, 104	2-BHK	60.10	37.21	127	26.11
102, 103	3-BHK	89.86	23.48	150	25.03

Factor of conversion from Sq. Meter to Sq. Feet is 10.764





**E WING**  
2ND FLOOR PLAN

Area statement in Sq. Meter

FLAT NO.	TYPE	CARPET AREA	TERRACE CARPET	ENT. AREA	COURTYARD AREA
201, 205	2-BHK	60.10	13.14	0.00	0.00
202, 204	3-BHK	89.76	19.51	2.08	0.00
203	2-BHK	63.00	18.52	2.08	18.06

Factor of conversion from Sq. Meter to Sq. Feet is 10.764



**E WING**  
3RD, 5TH, 9TH & 11TH FLOOR PLAN

Area statement in Sq. Meter

FLAT NO.	TYPE	CARPET AREA	TERRACE CARPET	ENT. AREA
301, 501, 901, 1101	2-BHK	60.10	14.54	0.00
302, 502, 902, 1102	2-BHK	63.64	18.16	2.08
303, 503, 903, 1103	2-BHK	63.64	18.16	2.08
304, 504, 904, 1104	3-BHK	89.86	19.44	2.08
305, 505, 905, 1105	2-BHK	60.10	14.54	0.00

Factor of conversion from Sq. Meter to Sq. Feet is 10.764





## E WING

4TH, 6TH, 8TH & 10TH FLOOR PLAN

Area statement in Sq. Meter

FLAT NO.	TYPE	CARPET AREA	TERRACE CARPET	ENT. AREA
401,601,801,1001	2-BHK	60.10	13.14	0.00
402,602,802,1002	3-BHK	89.76	19.51	2.08
403,603,803,1003	2-BHK	63.00	18.27	2.08

Factor of conversion from Sq. Meter to Sq. Feet is 10.764



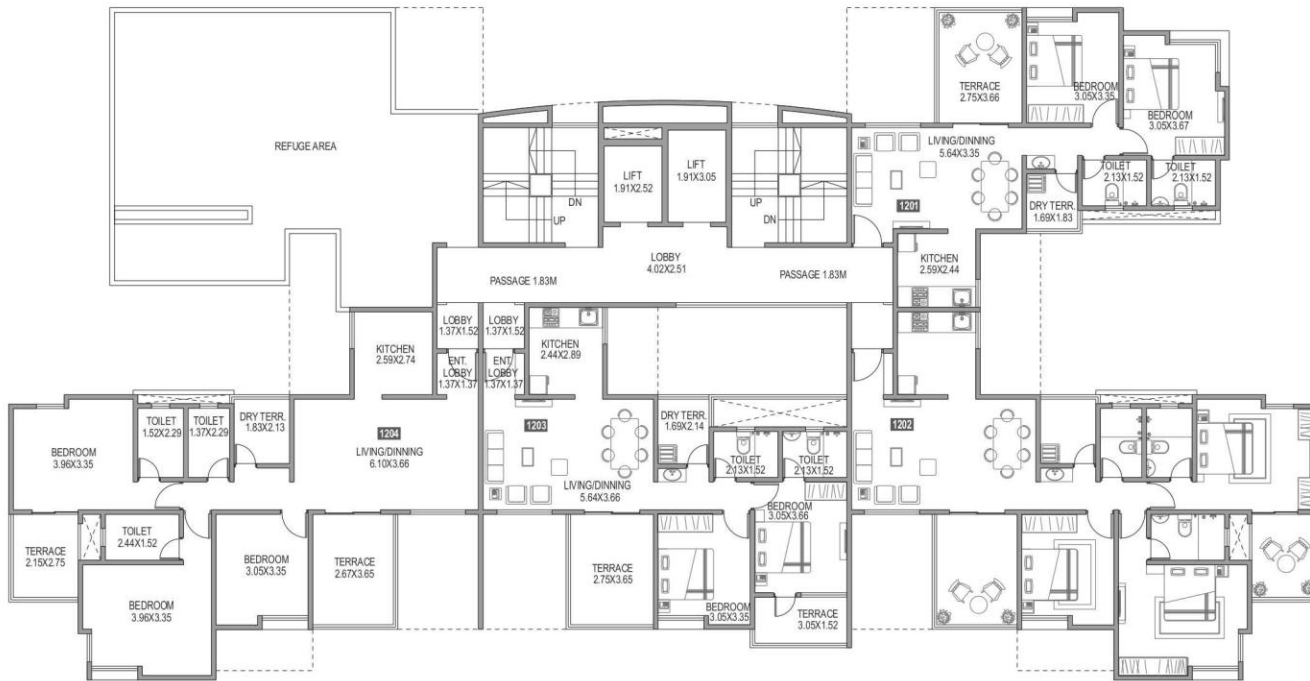


**E WING**  
7TH FLOOR PLAN

Area statement in Sq. Meter

FLAT NO.	TYPE	CARPET AREA	TERRACE CARPET	ENT. AREA
701	2-BHK	60.10	14.54	0.00
702, 704	3-BHK	89.86	19.45	2.08
703	2-BHK	63.64	18.16	2.08

Factor of conversion from Sq. Meter to Sq. Feet is 10.764



**E WING**  
12TH FLOOR PLAN



Area statement in Sq. Meter

FLAT NO.	TYPE	CARPET AREA	TERRACE CARPET	ENT. AREA
1201	2-BHK	60.10	13.14	0.00
1202, 1204	3-BHK	89.76	19.51	2.08
1203	2-BHK	63.00	18.27	2.08

Factor of conversion from Sq. Meter to Sq. Feet is 10.764

## Azure Building F Plans





**F WING**  
1ST FLOOR PLAN

Area statement in Sq. Meter

FLAT NO.	TYPE	CARPET AREA	TERRACE CARPET	ENT. AREA	COURTYARD AREA
101, 105	2-BHK	60.10	37.21	127	26.11
102, 104	2-BHK	61.67	23.25	113	26.11

Factor of conversion from Sq. Meter to Sq. Feet is 10.764



**F WING**  
2ND FLOOR PLAN

Area statement in Sq. Meter

FLAT NO.	TYPE	CARPET AREA	TERRACE CARPET	ENT. AREA	COURTYARD AREA
201, 205	2-BHK	60.10	13.14	0.00	0
202, 204	2-BHK	61.04	17.77	1.86	0
203	2-BHK	63.00	18.27	2.06	18.06

Factor of conversion from Sq. Meter to Sq. Feet is 10.764



**F WING**  
3RD, 5TH, 9TH & 11TH FLOOR PLAN

Area statement in Sq. Meter

FLAT NO.	TYPE	CARPET AREA	TERRACE CARPET	ENT. AREA
301, 501, 901, 1101				
305, 505, 905, 1105	2-BHK	60.10	14.54	0
302, 502, 902, 1102	2-BHK	61.67	18.71	1.86
304, 504, 904, 1104	2-BHK	63.64	18.16	2.06

Factor of conversion from Sq. Meter to Sq. Feet is 10.764





## F WING

4TH, 6TH, 8TH & 10TH FLOOR PLAN

Area statement in Sq. Meter

FLAT NO.	TYPE	CARPET AREA	TERRACE CARPET	ENT. AREA
401.601.801.1001	2-BHK	60.10	13.14	0
402.602.802.1002	2-BHK	61.04	17.77	1.86
403.603.803.1003	2-BHK	63.00	18.27	2.06

Factor of conversion from Sq. Meter to Sq. Feet is 10.764





## F WING

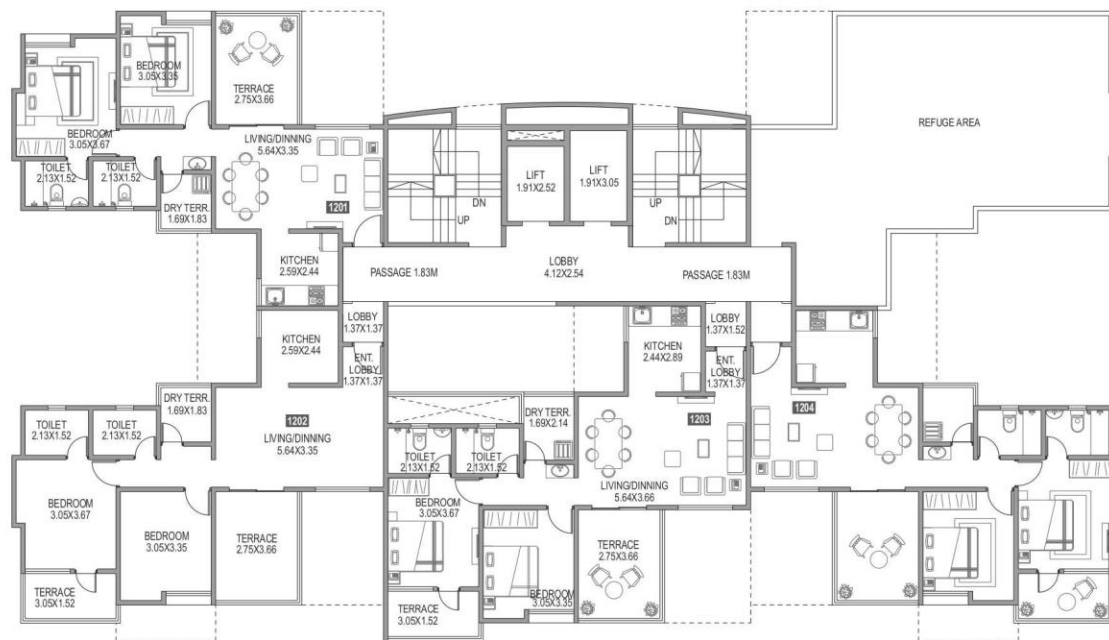
### 7TH FLOOR PLAN

Area statement in Sq. Meter

FLAT NO.	TYPE	CARPET AREA	TERRACE CARPET	ENT. AREA
701	2-BHK	60.10	14.54	0.00
702, 704	2-BHK	61.67	18.71	1.86
703	2-BHK	63.64	18.16	2.06

Factor of conversion from Sq. Meter to Sq. Feet is 10.764

**"F" WING**  
12TH FLOOR PLAN



**F WING**  
12TH FLOOR PLAN

Area statement in Sq. Meter

FLAT NO.	TYPE	CARPET AREA	TERRACE CARPET	ENT. AREA
1201	2-BHK	60.10	13.14	0.00
1202, 1204	2-BHK	61.04	17.77	1.86
1203	2-BHK	63.00	18.27	2.06

Factor of conversion from Sq. Meter to Sq. Feet is 10.764



---

**PARANJAPE SCHEMES ( CONSTRUCTION ) LIMITED**

---

The Spirit Of New India

**Corporate Office : 'PSC House', Dr.Ketkar  
Marg, Off Prabhat Road, Pune 411 004.**

**Call : +91 – 20 – 3939 4949**

**[www.pscl.in](http://www.pscl.in)**

**Disclaimer:** The plans, specifications, images and other details here in are only indicative and the developer/owner reserve the right to change any or all. The website content does not constitute a contract / offer of any type between the developer/owner and the recipient. Any purchase / lease of this development shall be governed by the terms and conditions of the agreement for sale/lease entered into between parties and no details mentioned in this website content shall in any way govern such transaction.